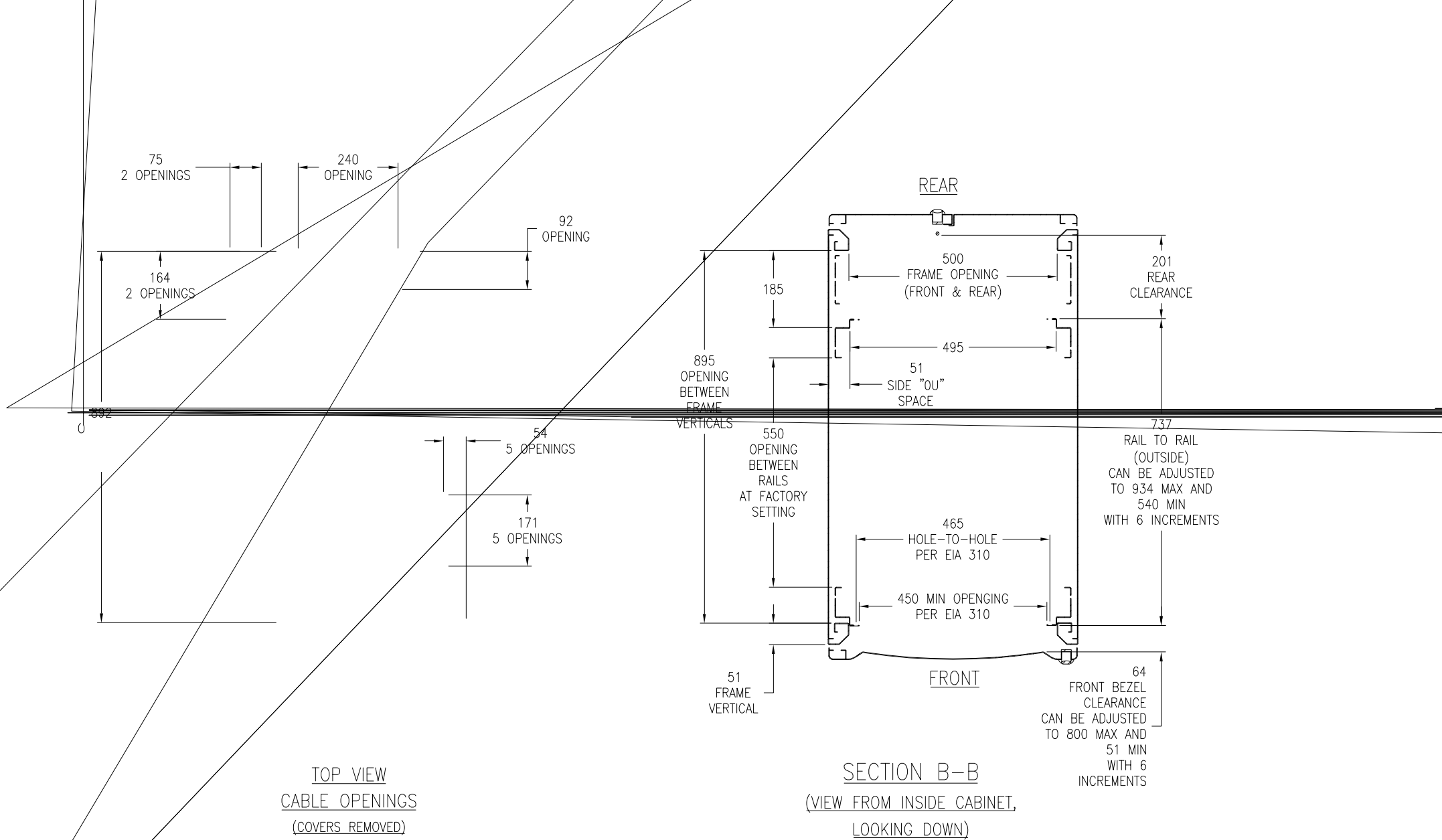


THIS PANEL IS  
CONSTRUCTED  
WITH PERFORATED  
MATERIAL  
FOR AIR FLOW



TOTAL OPEN AREA  
6758.90 SQ.CM

TOTAL OPEN AREA  
7626.40 SQ.CM  
(OPEN AREA  
PER U SPACE  
158.90 SQ.CM)



FRONT

PALLET BRACKET (2)

ADJUSTABLE LEVELING FEET (4)

2

REAR

BOTTOM VIEW  
(WITH PALLET BRACKETS  
(CAN BE USED FOR ANCHORING))

FRONT

BOLT-DOWN BRACKET (4)

ADJUSTABLE LEVELING FEET (4)

2

1022  
LEVELLING FEET  
CENTER TO  
CENTER

941  
CASTERS  
CENTER TO  
CENTER

REAR

401  
CASTERS  
CENTER TO  
CENTER

BOTTOM VIEW  
(WITH OPTIONAL BOLT-DOWN BRACKETS  
FOR ANCHORING)

