

LC Sliding Patch Panel

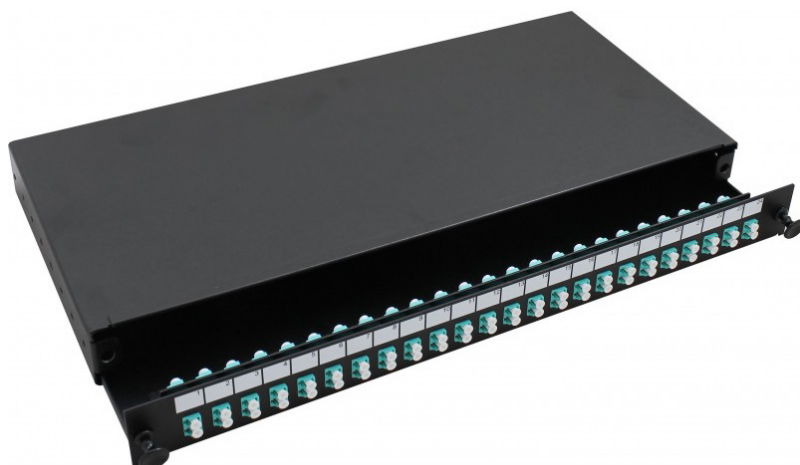
The Connectix range of sliding patch panels are available with a wide range of adaptor types and populations. The panels are manufactured from mild steel and are finished in a black powder coating.

The panels feature fully adjustable mounting brackets, numbered adaptor ports and a range of panel knock-outs to suit common gland sizes.

The panels include a sliding tray for easy access to splices. Panels are supplied fully loaded and complete with splice management. Unloaded versions and other connector styles are available upon request.

Features & Benefits

- Easy access to splices from the front of the rack
- High quality rigid mild steel construction
- Rear cable gland knock outs
- Adjustable mounting brackets for flush or recessed fitting
- Fibre management kits included



Product Specifications	
Width (mm)	483 (19")
Depth (mm)	200
Height (mm)	44 (1u)
Weight (kg)	2.8 (fully loaded)
Colour	Black (RAL9004)
Cable Entry Gland Holes	4 x 10mm and 2 x 20mm

Ordering Information	
Product Description	Part Number
Sliding Panel, 4 Way LC Duplex Multimode	009-022-040-02
Sliding Panel, 8 Way LC Duplex Multimode	009-022-040-04
Sliding Panel, 12 Way LC Duplex Multimode	009-022-040-06
Sliding Panel, 16 Way LC Duplex Multimode	009-022-040-08
Sliding Panel, 24 Way LC Duplex Multimode	009-022-040-12
Sliding Panel, 48 Way LC Duplex Multimode	009-022-040-24
Sliding Panel, 12 Quad LC Multimode	009-022-040-48
Sliding Panel, 16 Quad LC Multimode	009-022-040-64
Sliding Panel, 18 Quad LC Multimode	009-022-040-72
Sliding Panel, 24 Quad LC Multimode	009-022-040-96

Ordering Information	
Product Description	Part Number
Sliding Panel, 4 Way LC Duplex Singlemode	009-023-040-02
Sliding Panel, 8 Way LC Duplex Singlemode	009-023-040-04
Sliding Panel, 12 Way LC Duplex Singlemode	009-023-040-06
Sliding Panel, 16 Way LC Duplex Singlemode	009-023-040-08
Sliding Panel, 24 Way LC Duplex Singlemode	009-023-040-12
Sliding Panel, 48 Way LC Duplex Singlemode	009-023-040-24
Sliding Panel, 12 Quad LC Singlemode	009-023-040-48
Sliding Panel, 16 Quad LC Singlemode	009-023-040-64
Sliding Panel, 18 Quad LC Singlemode	009-023-040-72
Sliding Panel, 24 Quad LC Singlemode	009-023-040-96