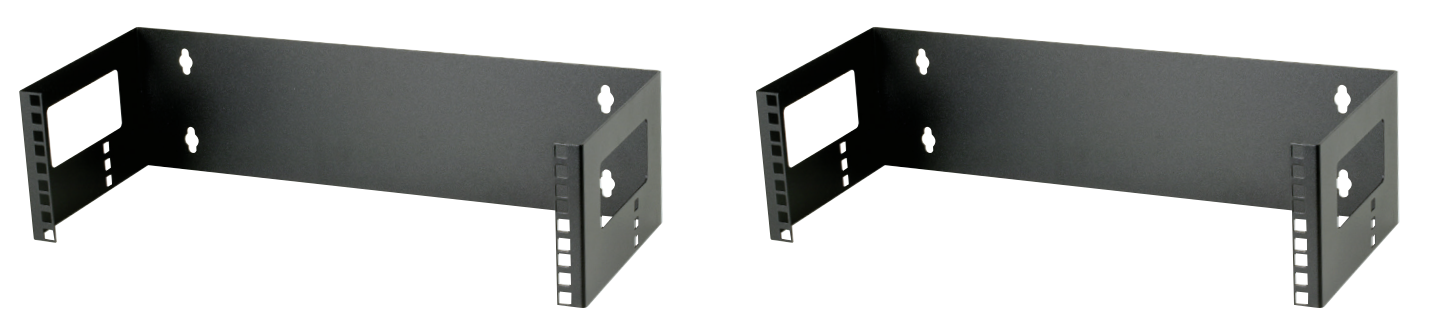


# Cabinets

## Wall Mounting Frames



The 19" Wall Mounting Frames are an ideal alternative when a lockable cabinet isn't required. They are ideal for mounting patch panels and other shallow 19" rack mount equipment, and their lightweight construction means they can be mounted on virtually any wall.



### Features & Benefits

- Ideal for installation sites where space is limited such as risers and shafts
- Standard finish black (other colours on request)
- Easy access to internal equipment
- Manufactured in the UK
- Can be supplied with top and bottom covers

### Accessories

A full range of cabinet accessories are available including; PDUs, fixed shelves, telescopic shelves, castors, cage nuts, baying kits, roof mounting fan units and plinths.

Ordering Information	
Product Description	Part Number
1u 11" Wall Mounting Frame 50 mm Deep	009-000-035-02
2u 19" Wall Mounting Frame 200 mm Deep	009-000-032-02
3u 19" Wall Mounting Frame 200 mm Deep	009-000-032-03
4u 19" Wall Mounting Frame 200 mm Deep	009-000-032-04
6u 19" Wall Mounting Frame 200 mm Deep	009-000-032-06
3u 19" Wall Mounting Frame 350 mm Deep	009-000-034-03
6u 19" Wall Mounting Frame 350 mm Deep	009-000-034-06
350 mm Wall Frame Top/Bottom Plate	009-000-035-25
200 mm Wall Frame Top/Bottom Plate	009-000-035-20